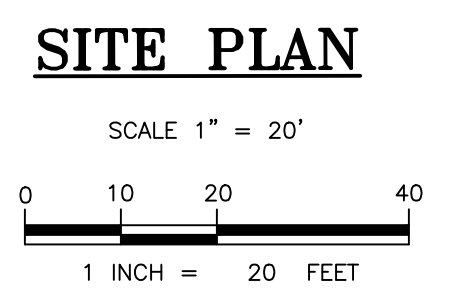


NOTES:  
 1. ROCKS SHOWN ON PLAN ARE SYMBOLIC AND DO NOT REPRESENT INDIVIDUAL STONES. SEE DETAIL DWG DE-01/SHEET 3 TO DWG DE-03/SHEET 5 FOR INDIVIDUAL STONE SIZING.  
 2. RIFFLE-WEIRS SHALL BE INSTALLED PARABOLICALLY IN ACCORDANCE WITH THE DETAILS/SPECIFICATIONS ON DWG DE-01/SHEET 3.  
 3. RIFFLE-WEIR RUNS NOT SHOWN IN PLAN VIEW



**BayLand**  
 Consultants & Designers, Inc.  
*"Integrating Engineering and Environment"*

7455 New Ridge Road, Suite T Phone: (410) 694-9401  
 Hanover, Maryland 21076 Fax: (410) 694-9405  
 Website: www.baylandinc.com

REVISED				APPROVED				DATE				APPROVED				DATE				SCALE: 1" = 20'			
DATE		BY		DATE		BY		DATE		BY		DATE		BY		DATE		BY		DESIGNED BY: KJM			
																		DRAWN BY: KJM					
				CHIEF ENGINEER				PROJECT MANAGER				CHECKED BY: CMS/SMC											
APPROVED				DATE				APPROVED				DATE				SHEET NO. 13 OF 46							
DEPUTY DIRECTOR				CHIEF, RIGHT OF WAY								CONTRACT NO. B571107											

**FOXMOOR STREAM RESTORATION REACH 1 SITE PLAN**

COUNCIL DISTRICT 5

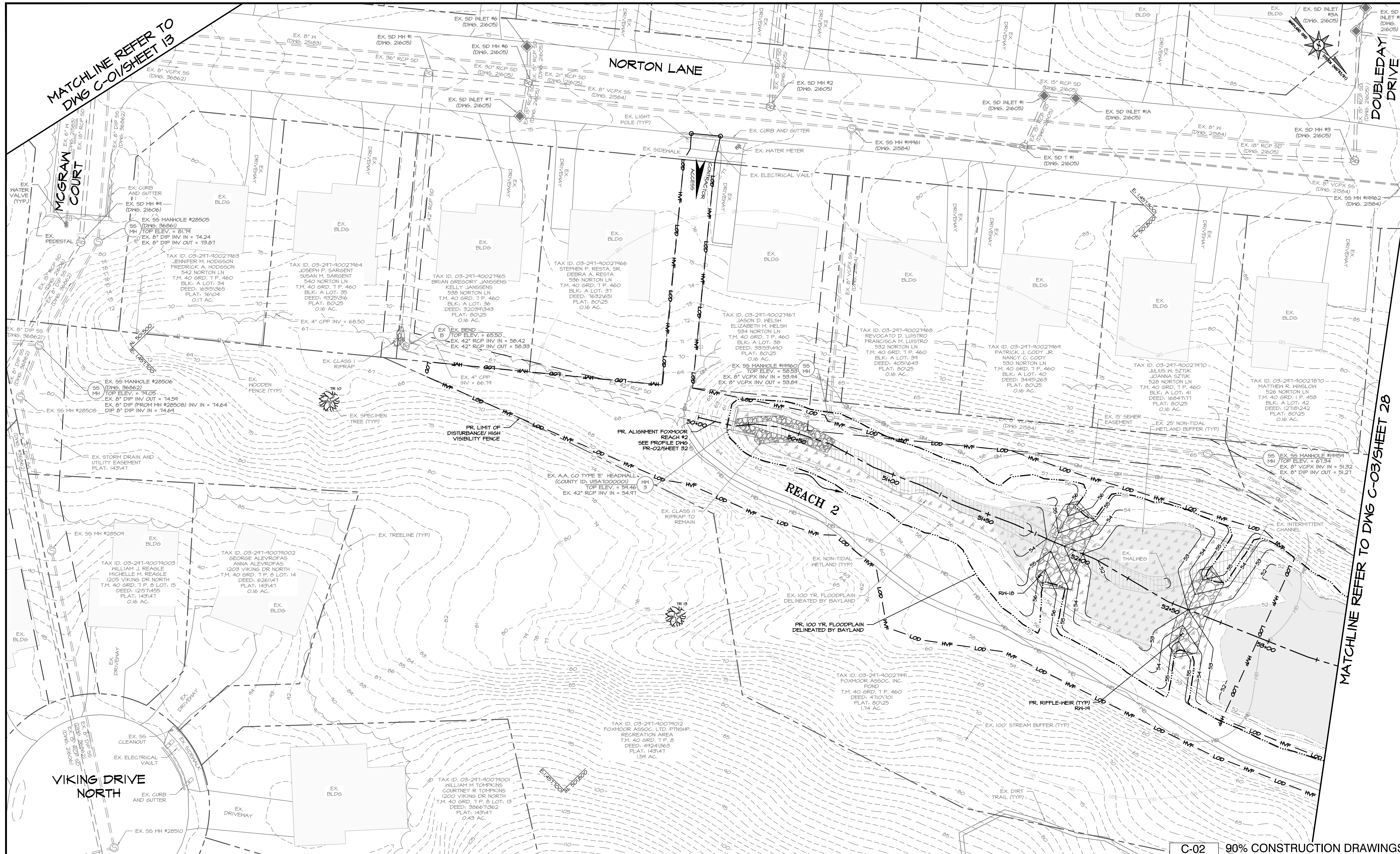
C-01 90% CONSTRUCTION DRAWINGS

MATCHLINE REFER TO DWG C-02/SHEET 27

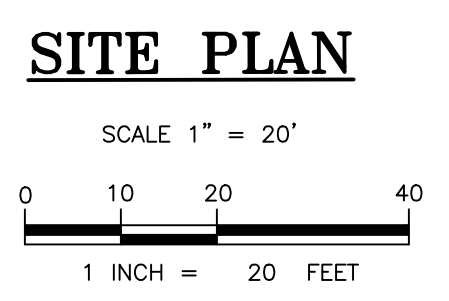


MATCHLINE REFER TO DWG C-01/SHEET 13

MATCHLINE REFER TO DWG C-03/SHEET 28



- NOTES:
- ROCKS SHOWN ON PLAN ARE SYMBOLIC AND DO NOT REPRESENT INDIVIDUAL STONES. SEE DETAIL DWG DE-01/SHEET 3 TO DWG DE-03/SHEET 5 FOR INDIVIDUAL STONE SIZING.
  - RIFLE-WEIRS SHALL BE INSTALLED PARABOLICALLY IN ACCORDANCE WITH THE DETAILS/SPECIFICATIONS ON DWG DE-01/SHEET 3.
  - RIFLE-WEIR RUNS NOT SHOWN IN PLAN VIEW.



**BayLand**  
**Consultants & Designers, Inc.**  
*"Integrating Engineering and Environment"*

7455 New Ridge Road, Suite T Phone: (410) 694-9401  
 Hanover, Maryland 21076 Fax: (410) 694-9405  
 Website: www.baylandinc.com

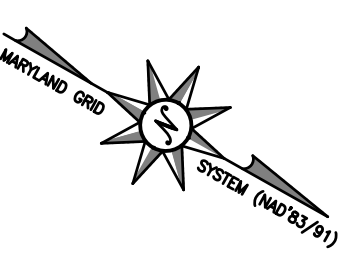
REVISED DATE		APPROVED BY	DATE	APPROVED DATE	APPROVED DATE	SCALE: 1" = 20'
		CHIEF ENGINEER		PROJECT MANAGER		DESIGNED BY: KJM
		APPROVED		APPROVED		DRAWN BY: KJM
		DEPUTY DIRECTOR		CHIEF, RIGHT OF WAY		CHECKED BY: CMS/SMC
						SHEET NO. 27 OF 46
						CONTRACT NO. B571107

C-02 90% CONSTRUCTION DRAWINGS

**FOXMOOR STREAM RESTORATION REACH 2 SITE PLAN**

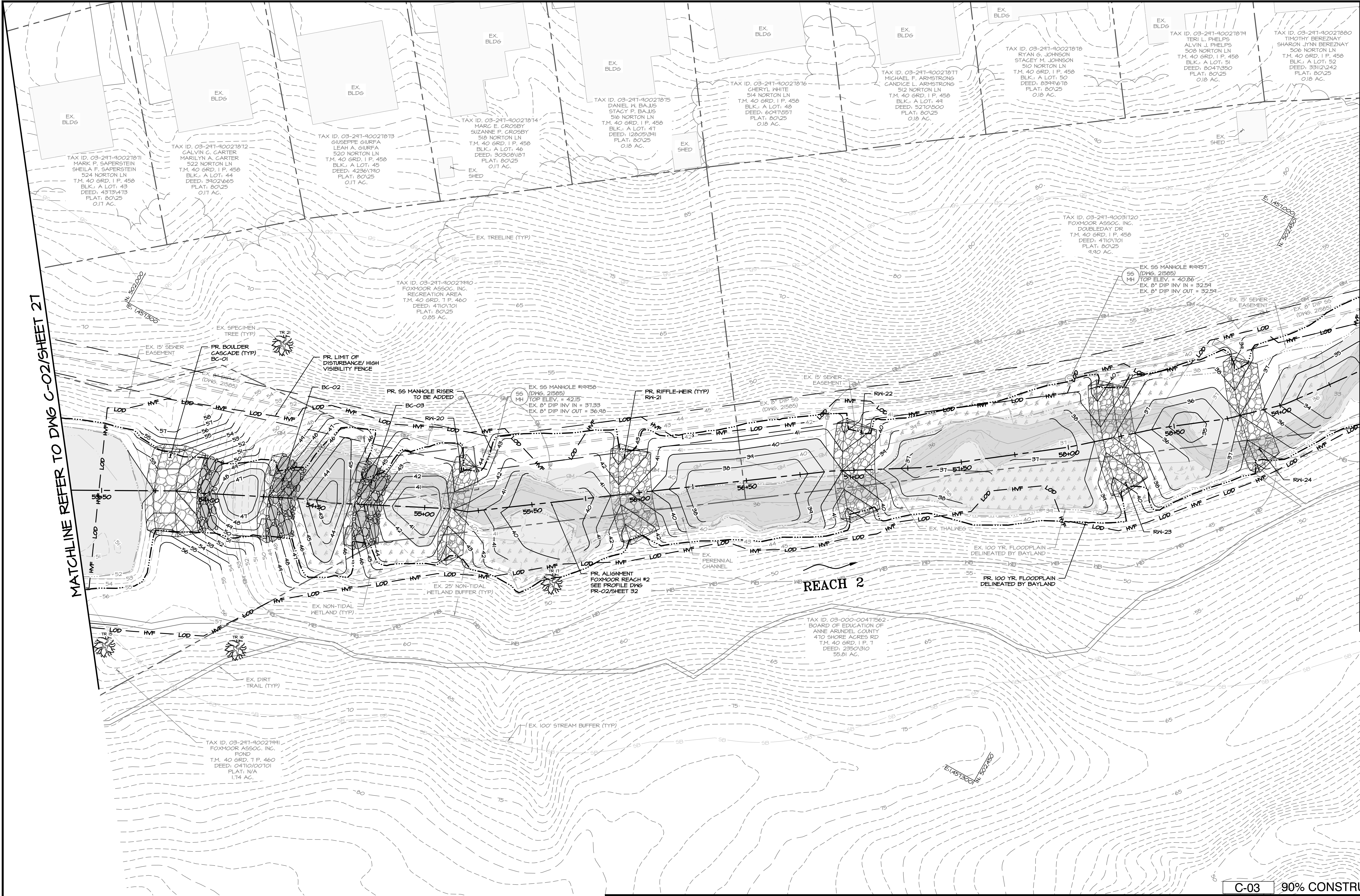
COUNCIL DISTRICT 5



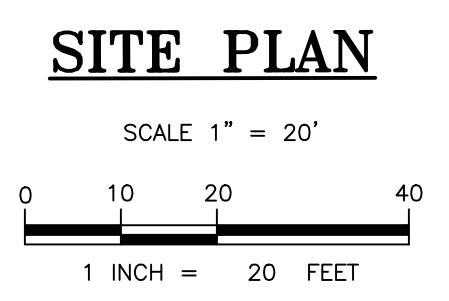


MATCHLINE REFER TO DWG C-02/SHEET 21

MATCHLINE REFER TO DWG C-04/SHEET 21



- NOTES:
- ROCKS SHOWN ON PLAN ARE SYMBOLIC AND DO NOT REPRESENT INDIVIDUAL STONES. SEE DETAIL DWG DE-01/SHEET 3 TO DWG DE-03/SHEET 5 FOR INDIVIDUAL STONE SIZING.
  - RIFFLE-WEIRS SHALL BE INSTALLED PARABOLICALLY IN ACCORDANCE WITH THE DETAILS/SPECIFICATIONS ON DWG DE-01/SHEET 3.
  - RIFFLE-WEIR RUNS NOT SHOWN IN PLAN VIEW.



**BayLand**  
 Consultants & Designers, Inc.  
*"Integrating Engineering and Environment"*

7455 New Ridge Road, Suite T Phone: (410) 694-9401  
 Hanover, Maryland 21076 Fax: (410) 694-9405  
 Website: www.baylandinc.com

**C-03 90% CONSTRUCTION DRAWINGS**

**ANNE ARUNDEL COUNTY**  
 DEPARTMENT OF PUBLIC WORKS

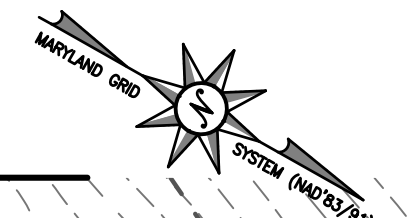
REVISED DATE	BY	APPROVED	DATE	APPROVED	DATE	SCALE: 1" = 20'
						DESIGNED BY: KJM
						DRAWN BY: KJM
						CHECKED BY: CMS/SMC
						SHEET NO. 28 OF 46
						CONTRACT NO. B571107

**FOXMOOR STREAM RESTORATION REACH 2 SITE PLAN**

COUNCIL DISTRICT 5



MATCHLINE REFER TO DWG C-06/SHEET 31

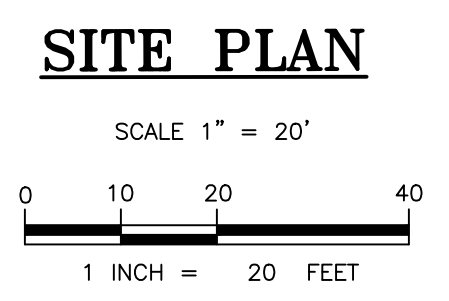


MATCHLINE REFER TO DWG C-03/SHEET 28

MATCHLINE REFER TO DWG C-05/SHEET 30



- NOTES:
- ROCKS SHOWN ON PLAN ARE SYMBOLIC AND DO NOT REPRESENT INDIVIDUAL STONES. SEE DETAIL DWG DE-01/SHEET 3 TO DWG DE-03/SHEET 5 FOR INDIVIDUAL STONE SIZING.
  - RIFLE-WEIRS SHALL BE INSTALLED PARABOLICALLY IN ACCORDANCE WITH THE DETAILS/SPECIFICATIONS ON DWG DE-01/SHEET 3.
  - RIFLE-WEIR RUNS NOT SHOWN IN PLAN VIEW.



**BayLand**  
 Consultants & Designers, Inc.  
 "Integrating Engineering and Environment"

7455 New Ridge Road, Suite T Phone: (410) 694-9401  
 Hanover, Maryland 21076 Fax: (410) 694-9405  
 Website: www.baylandinc.com

C-04 90% CONSTRUCTION DRAWINGS

**ANNE ARUNDEL COUNTY**  
 DEPARTMENT OF PUBLIC WORKS

REVISED DATE	BY	APPROVED DATE	APPROVED DATE	SCALE: 1" = 20'
				DESIGNED BY: KJM
				DRAWN BY: KJM
				CHECKED BY: CMS/SMC
				SHEET NO. 29 OF 46
				CONTRACT NO. B571107

**FOXMOOR STREAM RESTORATION REACH 2 SITE PLAN**

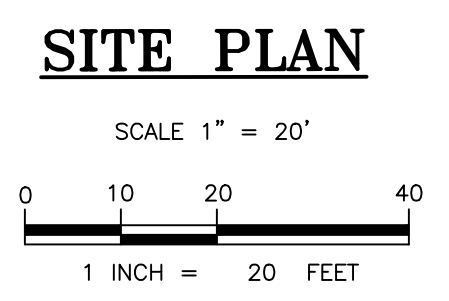
COUNCIL DISTRICT 5



MATCHLINE REFER TO DWG C-04/SHEET 29



- NOTES:
- ROCKS SHOWN ON PLAN ARE SYMBOLIC AND DO NOT REPRESENT INDIVIDUAL STONES. SEE DETAIL DWG DE-01/SHEET 3 TO DWG DE-03/SHEET 5 FOR INDIVIDUAL STONE SIZING.
  - RIFFLE-WEIRS SHALL BE INSTALLED PARABOLICALLY IN ACCORDANCE WITH THE DETAILS/SPECIFICATIONS ON DWG DE-01/SHEET 3.
  - RIFFLE-WEIR RUNS NOT SHOWN IN PLAN VIEW.



**BayLand**  
**Consultants & Designers, Inc.**  
*"Integrating Engineering and Environment"*

7455 New Ridge Road, Suite T Phone: (410) 694-9401  
 Hanover, Maryland 21076 Fax: (410) 694-9405  
 Website: www.baylandinc.com

**C-05 90% CONSTRUCTION DRAWINGS**

**ANNE ARUNDEL COUNTY**  
**DEPARTMENT OF PUBLIC WORKS**

REVISED DATE	BY	APPROVED DATE	APPROVED DATE	SCALE:
				1" = 20'
				DESIGNED BY: KJM
				DRAWN BY: KJM
				CHECKED BY: CMS/SMC
				SHEET NO. 30 OF 46
				CONTRACT NO. B571107

**FOXMOOR STREAM RESTORATION REACH 2 SITE PLAN**

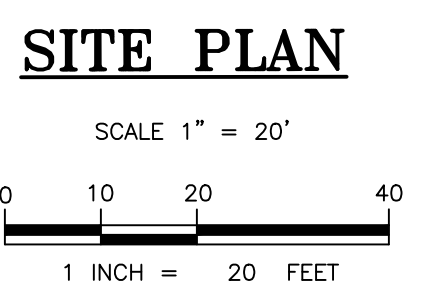
COUNCIL DISTRICT 5





MATCHLINE REFER TO DWG C-04/SHEET 29

- NOTES:
- ROCKS SHOWN ON PLAN ARE SYMBOLIC AND DO NOT REPRESENT INDIVIDUAL STONES. SEE DETAIL DWG DE-01/SHEET 3 TO DWG DE-03/SHEET 5 FOR INDIVIDUAL STONE SIZING.
  - RIFLE-WEIRS SHALL BE INSTALLED PARABOLICALLY IN ACCORDANCE WITH THE DETAILS/SPECIFICATIONS ON DWG DE-01/SHEET 3.
  - RIFLE-WEIR RUNS NOT SHOWN IN PLAN VIEW.



**BayLand**  
 Consultants & Designers, Inc.  
*"Integrating Engineering and Environment"*

7455 New Ridge Road, Suite T Phone: (410) 694-9401  
 Hanover, Maryland 21076 Fax: (410) 694-9405  
 Website: www.baylandinc.com

**C-06 90% CONSTRUCTION DRAWINGS**

**ANNE ARUNDEL COUNTY  
 DEPARTMENT OF PUBLIC WORKS**

REVISED	APPROVED	DATE	APPROVED	DATE	SCALE: 1" = 20'
DATE	BY				DESIGNED BY: KJM
			CHIEF ENGINEER		DRAWN BY: KJM
			APPROVED	DATE	CHECKED BY: CMS/SMC
			DEPUTY DIRECTOR		SHEET NO. 31 OF 46
				CHIEF, RIGHT OF WAY	CONTRACT NO. B571107

**FOXMOOR STREAM  
 RESTORATION  
 REACH 2 SITE PLAN**

COUNCIL DISTRICT 5